



LOCKING 5.0mm  
**HIGH**  
OSTEOTOMY PLATE TYPE II



*\*The image is for promotional purposes only.  
It is not a recommendation for any type of surgery.*



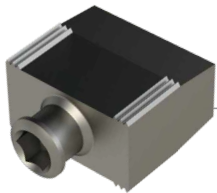
[www.osteofrance-ortho.fr](http://www.osteofrance-ortho.fr)

LOCKING 5.0 mm  
**HIGH**  
OSTEOTOMY PLATE TYPE II



Thread hole section for Ø 6,5mm  
locking cancellous screws

Kirschner Wire Hole



Wedge Plate



Thread hole section for Ø 5,0mm  
locking screws

**zimed**<sup>®</sup>



www.osteofrance-ortho.fr

LOCKING 5.0 mm  
**HIGH**  
OSTEOTOMY PLATE TYPE II



## Locking Adjustable High Tibia Osteotomy Plate Type II

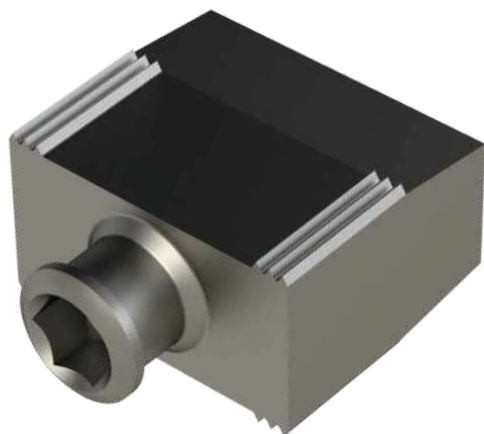
REF. NO	LENGTH (mm)
1972-0006	6
1972-0008	8
1972-0010	10
1972-0012	12
1972-0014	14

**zimed**<sup>®</sup>



www.osteofrance-ortho.fr

LOCKING 5.0 mm  
**HIGH**  
OSTEOTOMY PLATE TYPE II



## Wedge Plate

REF. NO	LENGTH (mm)
1972-0006	6
1972-0008	8
1972-0010	10
1972-0012	12
1972-0014	14

**zimed**<sup>®</sup>



LOCKING 5.0 mm  
**HIGH**  
OSTEOTOMY PLATE TYPE II



**Ø6.5 mm**  
**Cancellous Screw**



REF NO	LENGTH (mm)
2182-0030	30
2182-0035	35
2182-0040	40
2182-0045	45
2182-0050	50
2182-0055	55
2182-0060	60
2182-0065	65
2182-0070	70
2182-0075	75
2182-0080	80
2182-0085	85
2182-0090	90
2182-0095	95
2182-0100	100
2182-0105	105
2182-0110	110
2182-0115	115
2182-0120	120



www.osteofrance-ortho.fr

LOCKING 5.0 mm  
**HIGH TIBIA**  
**OSTEOTOMY PLATE TYPE II**

**Ø5.0 mm**  
**Locking Screw**



REF. NO	LENGTH (mm)	REF. NO	LENGTH (mm)
2052-5012	12	2052-5042	42
2052-5014	14	2052-5044	44
2052-5016	16	2052-5046	46
2052-5018	18	2052-5048	48
2052-5020	20	2052-5050	50
2052-5022	22	2052-5055	55
2052-5024	24	2052-5060	60
2052-5026	26	2052-5065	65
2052-5028	28	2052-5070	70
2052-5030	30	2052-5075	75
2052-5032	32	2052-5080	80
2052-5034	34	2052-5085	85
2052-5036	36	2052-5090	90
2052-5038	38	2052-5095	95
2052-5040	40		

**zimed**<sup>®</sup>

